

epkinly[®]
 epcoritamab-bysp
 SUBCUTANEOUS INJECTION 4mg/48mg

MY REASON WHY

The power of EPKINLY makes remission possible

Approved to treat adults with **follicular lymphoma (FL)** that has returned or that didn't respond after 2 or more prior treatments

In a clinical study of 127 patients, EPKINLY achieved remission in 82% (104 patients): complete remission in 60% (76 patients) and partial remission in 22% (28 patients).

EPKINLY is approved based on patient response data. A study is ongoing to confirm the clinical benefit of EPKINLY.



Actor portrayals.

What is EPKINLY?

EPKINLY is a prescription medicine used to treat adults with follicular lymphoma (FL) that has come back or that did not respond to previous treatment after receiving 2 or more treatments. EPKINLY is approved based on patient response data. A study is ongoing to confirm the clinical benefit of EPKINLY. It is not known if EPKINLY is safe and effective in children.

SELECT IMPORTANT SAFETY INFORMATION

EPKINLY can cause serious side effects, including:

- **Cytokine release syndrome (CRS)**, which is common during treatment with EPKINLY and can be serious or life-threatening.
- **Neurologic problems** that can be life-threatening and lead to death.
- **Infections and Low blood cell counts.**

Please see additional Important Safety Information, including Important Warnings for CRS and neurologic problems, on pages 8-9. Please see [Medication Guide](#).



Learn about EPKINLY and what to expect from treatment

EPKINLY is:

- A bispecific antibody treatment that **harnesses the power of your own immune system to help fight cancer**
- **Given as an injection**; it's not an infusion, chemotherapy, or stem cell therapy
- A treatment that may be given at a location that is able to administer EPKINLY, such as **your oncologist's office or a nearby outpatient center**

What's inside

How EPKINLY works 3

Results with EPKINLY 4

How EPKINLY is given 6

Important Safety Information 8

Resources and support 10

Tips for talking to your healthcare provider 12

Important contact information 14



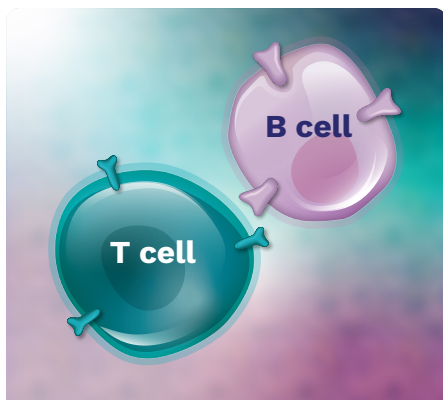
Scan the QR code or visit EPKINLY.com/FL for more information.

Please see Important Safety Information, including Important Warnings for CRS and neurologic problems, on pages 8-9. Please see [Medication Guide](#).

MY REASON WHY

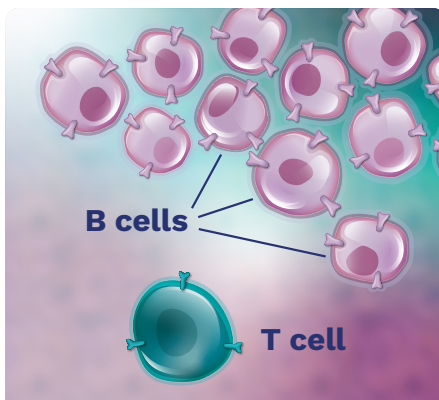
EPKINLY harnesses the power of your own immune system

EPKINLY is designed to target 2 types of cells in your body—T cells and B cells



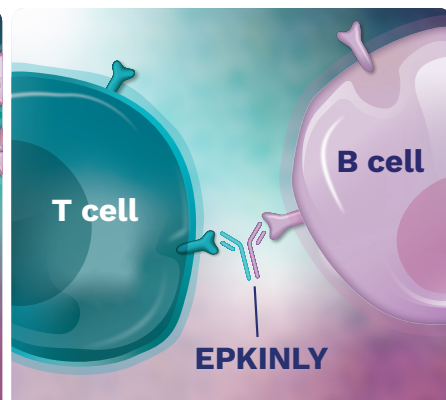
T Cells

T cells are immune cells that fight infections, as well as cancer cells.



B Cells

B cells are another type of immune cell, and in FL, some B cells can become cancerous and grow uncontrollably.



How EPKINLY Works

EPKINLY works by attaching to both your T cells and B cells, binding them together so that the T cells can attack and destroy B cells.

SELECT IMPORTANT SAFETY INFORMATION

Because EPKINLY works with your immune system, it **can cause serious side effects, including cytokine release syndrome (CRS), neurologic problems**, infections, and low blood cell counts.

Please see Important Safety Information, including Important Warnings for CRS and neurologic problems, on pages 8-9. Please see [Medication Guide](#).

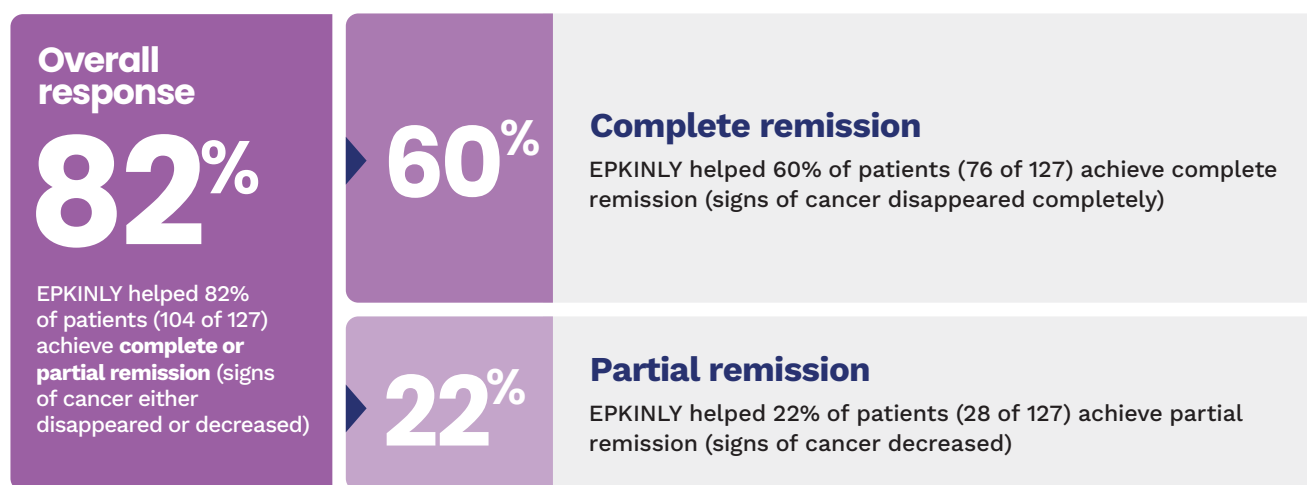

epcoritamab-bysp[®]

MY REASON WHY

The power of EPKINLY makes remission possible

EPKINLY is approved based on patient response data. A study is ongoing to confirm the clinical benefit of EPKINLY.

In the clinical study:



SELECT IMPORTANT SAFETY INFORMATION

Important Warnings—EPKINLY can cause serious side effects, including:

- **Cytokine release syndrome (CRS)**, which is common during treatment with EPKINLY and can be serious or life-threatening. To help reduce your risk of CRS, you will receive EPKINLY on a step-up dosing schedule (when you receive 3 smaller step-up doses of EPKINLY before your first full dose during your first cycle of treatment), and you may also receive other medicines before and for 3 days after receiving EPKINLY. Your first full dose of EPKINLY will be given on day 22 of your first cycle of treatment. If your dose of EPKINLY is delayed for any reason, you may need to repeat the step-up dosing schedule.
- **Neurologic problems** that can be life-threatening and lead to death. Neurologic problems may happen days or weeks after you receive EPKINLY.

Please see additional Important Safety Information, including Important Warnings for CRS and neurologic problems, on pages 8-9. Please see [Medication Guide](#).



6

weeks

Patients who achieved complete or partial remission **started seeing results in as few as 6 weeks** (median* of 1.4 months; time varied from 1 to 3 months).

How was EPKINLY studied?

EPKINLY was studied in 127 patients with FL who had 2 or more treatments and whose cancer returned or did not respond.

Patients had been through a median* of 3 different types of treatments (range of prior treatments was 2 to 9), such as chemotherapy, immunotherapy (uses your body's immune system to help fight cancer), stem cell transplant, and CAR T therapy (chimeric antigen receptor T cell).

*The median is the number that is exactly in the middle of the range seen in the study.

SELECT IMPORTANT SAFETY INFORMATION

Tell your healthcare provider or get medical help right away if you develop a fever of 100.4°F (38°C) or higher; dizziness or lightheadedness; trouble breathing; chills; fast heartbeat; feeling anxious; headache; confusion; shaking (tremors); problems with balance and movement, such as trouble walking; trouble speaking or writing; confusion and disorientation; drowsiness, tiredness or lack of energy; muscle weakness; seizures; or memory loss. **These may be symptoms of CRS or neurologic problems.** If you have any symptoms that impair consciousness, **do not** drive or use heavy machinery or do other dangerous activities until your symptoms go away.

Please see additional Important Safety Information, including Important Warnings for CRS and neurologic problems, on pages 8-9. Please see [Medication Guide](#).

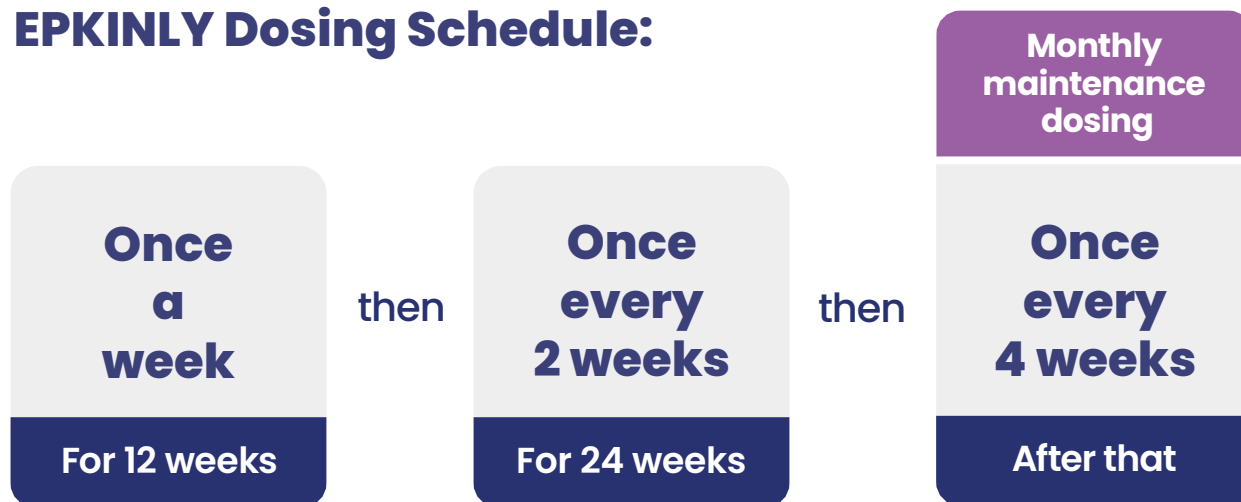
epkinly[®]
epcoritamab-bysp

MY REASON WHY

Unlike an infusion that may take time to administer, EPKINLY is given as an injection

EPKINLY is treatment given at a location that is able to administer EPKINLY, such as your oncologist's office or a nearby outpatient center.

EPKINLY Dosing Schedule:



To increase tolerability and help limit the potential for and severity of CRS, EPKINLY uses a “step-up” dosing schedule

During the first 3 weeks of treatment, you will receive smaller “step-up” doses than the doses you will receive in week 4 and for the rest of your treatment.

- Before and for 3 days after each dose of EPKINLY in your first 4 weeks of treatment, you will receive other medicines to help reduce your risk of CRS. Your healthcare provider will decide if you need to receive medicine to help reduce your risk of CRS in later doses of EPKINLY
- You may have side effects during treatment. Your healthcare provider will monitor you for symptoms of CRS, neurologic problems, infections, and low blood cell counts. Your treatment may be temporarily or completely stopped if you develop certain side effects
- If your dose of EPKINLY is delayed for any reason, you may need to repeat the step-up dosing schedule

Please see Important Safety Information, including Important Warnings for CRS and neurologic problems, on pages 8-9. Please see [Medication Guide](#).


epcoritamab-bysp



Staying on treatment with EPKINLY may help you achieve remission and continue to see response

- You will receive EPKINLY for as long as your healthcare provider finds it is working for you and your side effects are manageable
- Your healthcare provider may delay or completely stop your treatment with EPKINLY if you have certain side effects

SELECT IMPORTANT SAFETY INFORMATION

EPKINLY can cause other serious side effects, including:

- **Infections** that may lead to death. Your healthcare provider will check you for signs and symptoms of infection before and during treatment and treat you as needed if you develop an infection. You should receive medicines from your healthcare provider before you start treatment to help prevent infection. Tell your healthcare provider right away if you develop any symptoms of infection during treatment, including fever of 100.4°F (38°C) or higher, cough, chest pain, tiredness, shortness of breath, painful rash, sore throat, pain during urination, or feeling weak or generally unwell.
- **Low blood cell counts**, which can be serious or severe. Your healthcare provider will check your blood cell counts during treatment. EPKINLY may cause low blood cell counts, including low white blood cells (neutropenia), which can increase your risk for infection; low red blood cells (anemia), which can cause tiredness and shortness of breath; and low platelets (thrombocytopenia), which can cause bruising or bleeding problems.

Your healthcare provider will monitor you for symptoms of CRS, neurologic problems, infections, and low blood cell counts during treatment with EPKINLY. Your healthcare provider may temporarily stop or completely stop treatment with EPKINLY if you develop certain side effects.

Please see additional Important Safety Information, including Important Warnings for CRS and neurologic problems, on pages 8-9. Please see [Medication Guide](#).

epkinly[®]
epcoritamab-bysp

Important Safety Information

What is EPKINLY?

EPKINLY is a prescription medicine used to treat adults with follicular lymphoma (FL) that has come back or that did not respond to previous treatment after receiving 2 or more treatments. EPKINLY is approved based on patient response data. A study is ongoing to confirm the clinical benefit of EPKINLY. It is not known if EPKINLY is safe and effective in children.

IMPORTANT SAFETY INFORMATION

Important Warnings—EPKINLY can cause serious side effects, including:

- **Cytokine release syndrome (CRS)**, which is common during treatment with EPKINLY and can be serious or life-threatening. To help reduce your risk of CRS, you will receive EPKINLY on a step-up dosing schedule (when you receive 3 smaller step-up doses of EPKINLY before your first full dose during your first cycle of treatment), and you may also receive other medicines before and for 3 days after receiving EPKINLY. Your first full dose of EPKINLY will be given on day 22 of your first cycle of treatment. If your dose of EPKINLY is delayed for any reason, you may need to repeat the step-up dosing schedule.
- **Neurologic problems** that can be life-threatening and lead to death. Neurologic problems may happen days or weeks after you receive EPKINLY.

Tell your healthcare provider or get medical help right away if you develop a fever of 100.4°F (38°C) or higher; dizziness or lightheadedness; trouble breathing; chills; fast heartbeat; feeling anxious; headache; confusion; shaking (tremors); problems with balance and movement, such as trouble walking; trouble speaking or writing; confusion and disorientation; drowsiness, tiredness or lack of energy; muscle weakness; seizures; or memory loss. **These may be symptoms of CRS or neurologic problems.** If you have any symptoms that impair consciousness, **do not** drive or use heavy machinery or do other dangerous activities until your symptoms go away.

EPKINLY can cause other serious side effects, including:

- **Infections** that may lead to death. Your healthcare provider will check you for signs and symptoms of infection before and during treatment and treat you as needed if you develop an infection. You should receive medicines from your healthcare provider before you start treatment to help prevent infection. Tell your healthcare provider right away if you develop any symptoms of infection during treatment, including fever of 100.4°F (38°C) or higher, cough, chest pain, tiredness, shortness of breath, painful rash, sore throat, pain during urination, or feeling weak or generally unwell.
- **Low blood cell counts**, which can be serious or severe. Your healthcare provider will check your blood cell counts during treatment. EPKINLY may cause low blood cell counts, including low white blood cells (neutropenia), which can increase your risk for infection; low red blood cells (anemia), which can cause tiredness and shortness of breath; and low platelets (thrombocytopenia), which can cause bruising or bleeding problems.

Your healthcare provider will monitor you for symptoms of CRS, neurologic problems, infections, and low blood cell counts during treatment with EPKINLY. Your healthcare provider may temporarily stop or completely stop treatment with EPKINLY if you develop certain side effects.

Please see additional Important Safety Information on page 9.
Please see [Medication Guide](#).

Important Safety Information (continued)

Before you receive EPKINLY, tell your healthcare provider about all your medical conditions, including if you have an infection, are pregnant or plan to become pregnant, or are breastfeeding or plan to breastfeed. If you receive EPKINLY while pregnant, it may harm your unborn baby. **If you are a female who can become pregnant,** your healthcare provider should do a pregnancy test before you start treatment with EPKINLY and you should use effective birth control (contraception) during treatment and for 4 months after your last dose of EPKINLY. Tell your healthcare provider if you become pregnant or think that you may be pregnant during treatment with EPKINLY. Do not breastfeed during treatment with EPKINLY and for 4 months after your last dose of EPKINLY.

The most common side effects of EPKINLY include injection site reactions, CRS, COVID-19, tiredness, upper respiratory tract infections, muscle and bone pain, rash, diarrhea, fever, cough, and headache. **The most common severe abnormal laboratory test results** include decreased white blood cells and decreased red blood cells.

These are not all of the possible side effects of EPKINLY. Call your doctor for medical advice about side effects. You are encouraged to report side effects to the FDA at (800) FDA-1088 or www.fda.gov/medwatch or to Genmab US, Inc. at 1-855-4GENMAB (1-855-443-6622).



Please see additional Important Safety Information, including Important Warnings for CRS and neurologic problems, on page 8. Please see [Medication Guide](#).

MyNavCare™ is here to support you



With *MyNavCare*, you can receive personalized support throughout your treatment journey from a dedicated team that cares



A partner on your treatment journey

Your healthcare provider is your main source for treatment information. With *MyNavCare*, you gain access to additional resources and medication information.

- Dedicated support throughout your treatment
- Information about treatment access and financial support*
- Insight into independent organizations that may provide additional assistance
- Additional tools and resources that may help along the way



Financial assistance for eligible patients

MyNavCare may be able to help uninsured or underinsured patients receive financial assistance and information. This includes:

- Co-pay assistance program for commercially insured patients*
- Independent patient assistant foundation information†
- Genmab Patient Assistance Program



Ongoing personalized support

Your **Patient Engagement Liaison**‡ provides ongoing support throughout treatment. They're dedicated to you, helping to:

- Provide information about your condition
- Connect you to third-party organizations that may be able to help
- Offer resources for you and your Care Partners

*Based on eligibility requirements and Terms and Conditions.

†Eligibility criteria are determined by each independent third-party foundation. *MyNavCare* does not determine eligibility and cannot guarantee foundations will offer assistance.

‡*MyNavCare* Patient Engagement Liaisons are part of the *MyNavCare* Patient Support Program and do not provide medical advice or work under the direction of the prescribing healthcare providers. They are trained to direct patients to speak with their healthcare provider about any treatment-related questions.

Contact a *MyNavCare* Support Specialist by calling 1-866-NAV-CAR1 (1-866-628-2271), Monday-Friday, 8 AM - 8 PM ET. You can also scan the QR code or visit www.MyNavCare.com to learn more.



Please see Important Safety Information, including Important Warnings for CRS and neurologic problems, on pages 8-9. Please see [Medication Guide](#).





Support for you and your Care Partner

Here are some organizations that can help Patients and Care Partners connect with others, and provide information and resources throughout treatment.



CancerCare

www.cancer.org
800-813-HOPE (4673)



American Cancer Society

www.cancer.org
800-227-2345



Lymphoma Research Foundation

www.lymphoma.org
800-500-9976



The Leukemia & Lymphoma Society

www.lls.org
800-955-4572



Family Reach

www.familyreach.org
973-394-1411 ext. 1



Follicular Lymphoma Foundation

www.theflf.org
info@theflf.org

Information for Care Partners

If you're a Care Partner, you have become an integral part of your loved one's healthcare team.

Some responsibilities you may take on during your loved one's treatment:

- **Decision-making:** Researching clinical trials and treatment options, helping to consider treatment choices, and being an advocate for your loved one
- **Emotional:** Encouraging your loved one to share their feelings and helping them feel supported
- **Medical:** Helping watch for potential side effects, attending appointments, and ensuring they have what they need throughout their treatments
- **Logistical:** Scheduling and driving them to appointments, running errands, and assisting with daily needs

There are many available resources that may be helpful to patients, families, and Care Partners dealing with cancer. The above resources are not controlled, owned, or endorsed by Genmab/AbbVie, and Genmab/AbbVie is not responsible for their content.

Please see Important Safety Information, including Important Warnings for CRS and neurologic problems, on pages 8-9. Please see [Medication Guide](#).





CONSIDERING EPKINLY

Talk to your healthcare provider to see if EPKINLY is right for you

If you are considering treatment with EPKINLY, this tool can help you prepare for your appointment.

My previous treatments

Use this chart to write notes about your previous treatments so you can discuss them with your healthcare provider.

Previous treatment	What was your experience with this treatment? (eg, how you responded, side effects, dosing, how it was given)

My current medications

When considering a new treatment, you may have questions about your current medications:

My treatment goals

Write down what's important to you as you consider your next treatment.

Please see Important Safety Information, including Important Warnings for CRS and neurologic problems, on pages 8-9. Please see [Medication Guide](#).

Questions about EPKINLY

Use this chart to take notes when discussing EPKINLY with your healthcare provider.

EPKINLY	Notes
How it works	
Potential treatment benefits	
How it is given	
Potential treatment risks	



Patient/Care Partner tip: Consider asking your healthcare provider if you can record the conversation on your device, so you can reference it at a later time.

Please see Important Safety Information, including Important Warnings for CRS and neurologic problems, on pages 8-9. Please see [Medication Guide](#).



Important contact information

My Doctors

Name: _____

Phone number: _____

Office address: _____

Name: _____

Phone number: _____

Office address: _____

My Nurses

Name: _____

Phone number: _____

Office address: _____

Name: _____

Phone number: _____

Office address: _____

My Pharmacy

Name: _____

Phone number: _____

Pharmacy address: _____

My Emergency Contacts

Name: _____

Phone number: _____

Name: _____

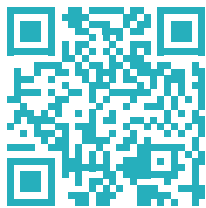
Phone number: _____

Please see Important Safety Information, including Important Warnings for CRS and neurologic problems, on pages 8-9. Please see [Medication Guide](#).



What's your reason?

Talk to your healthcare provider about EPKINLY



Scan the QR code or visit EPKINLY.com/FL for more information.

Please see Important Safety Information, including Important Warnings for CRS and neurologic problems, on pages 8-9. Please see [Medication Guide](#).



Distributed and marketed by Genmab US Inc. 777 Scudders Mill Road, Plainsboro, NJ 08536. Distributed and marketed by AbbVie Inc. 1 North Waukegan Road, North Chicago, IL 60064. EPKINLY is a registered trademark and MyNavCare is a trademark of Genmab A/S. All other trademarks and registered trademarks are the property of their respective owners. ©2024 Genmab A/S and AbbVie. All rights reserved. 06/2024 COM-US-EPK-0000873

